

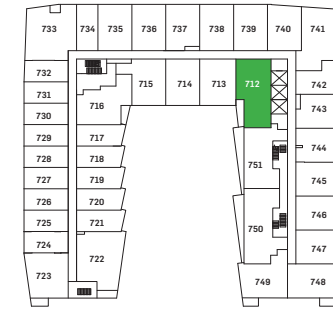
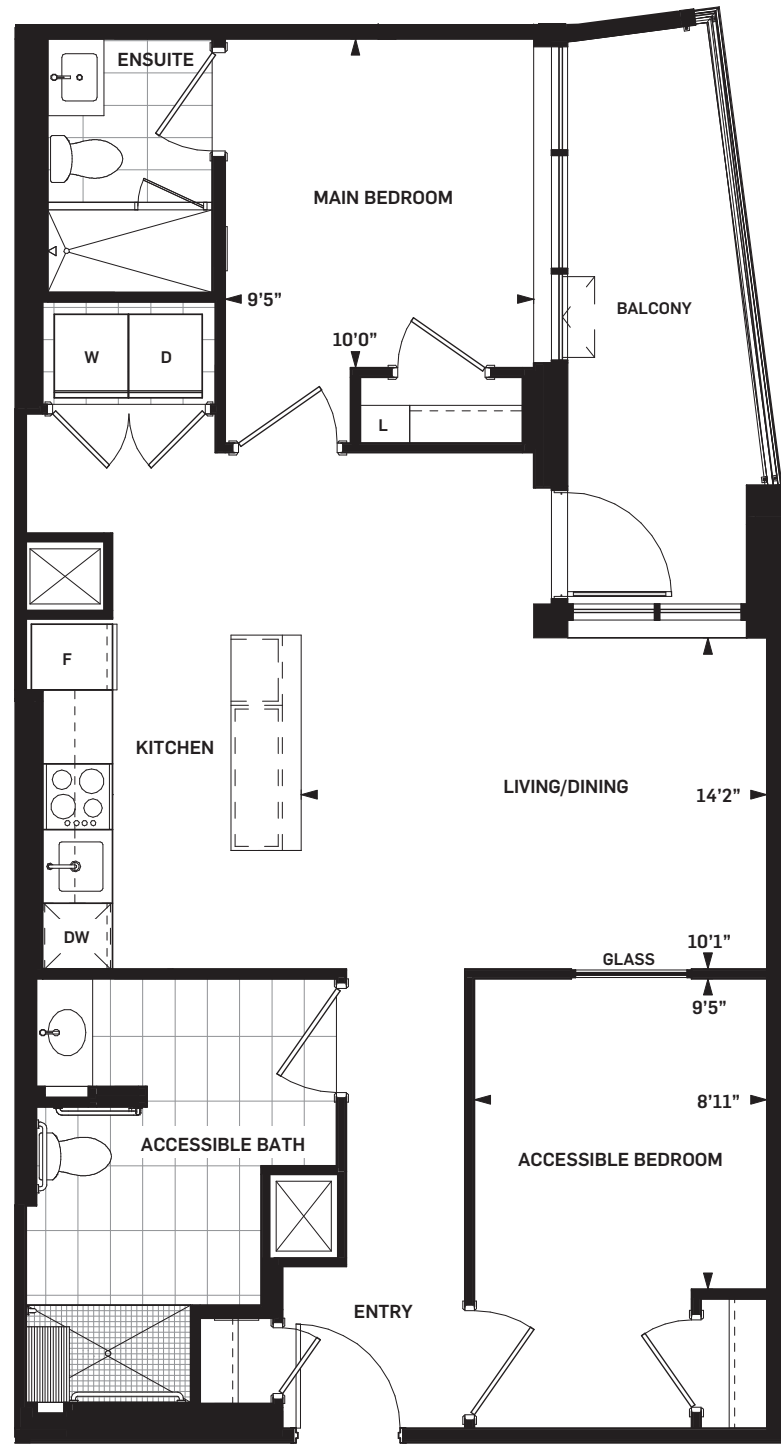


# DANIELS ON PARLIAMENT

**FRONT**  
2B-UU ADP | 2 BEDROOM

**SUITE AREA** 928 sq.ft.  
**OUTDOOR AREA** 88 - 91 sq.ft.  
**TOTAL AREA** 1016 - 1019 sq.ft.

**Daniels**  
love where you live™



LEVEL 07



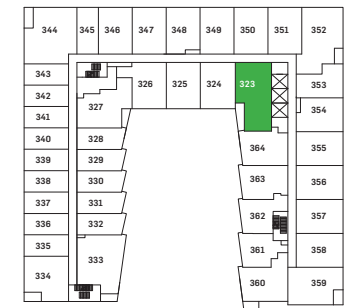
LEVEL 05



LEVEL 06



LEVEL 04



LEVEL 03



Drawings are not to scale. All areas and stated room dimensions are approximate. Note: Actual usable floor space may vary from the stated floor area. Floor area is measured in accordance with the HCRA directive on floor area calculations. Size and location of windows may vary. The purchaser acknowledges that the actual unit purchased may be a reversed mirror layout of the plan shown. Outdoor area will vary depending on unit location within the building. Illustration is artist's concept. E. & O. E. Please speak with a Sales Representative for details.

**ACCESSIBILITY  
DESIGNED**